

Ghostbusters Proton Pack Upgrade Kit

Designed specifically for the Hasbro Ghostbusters Afterlife proton pack

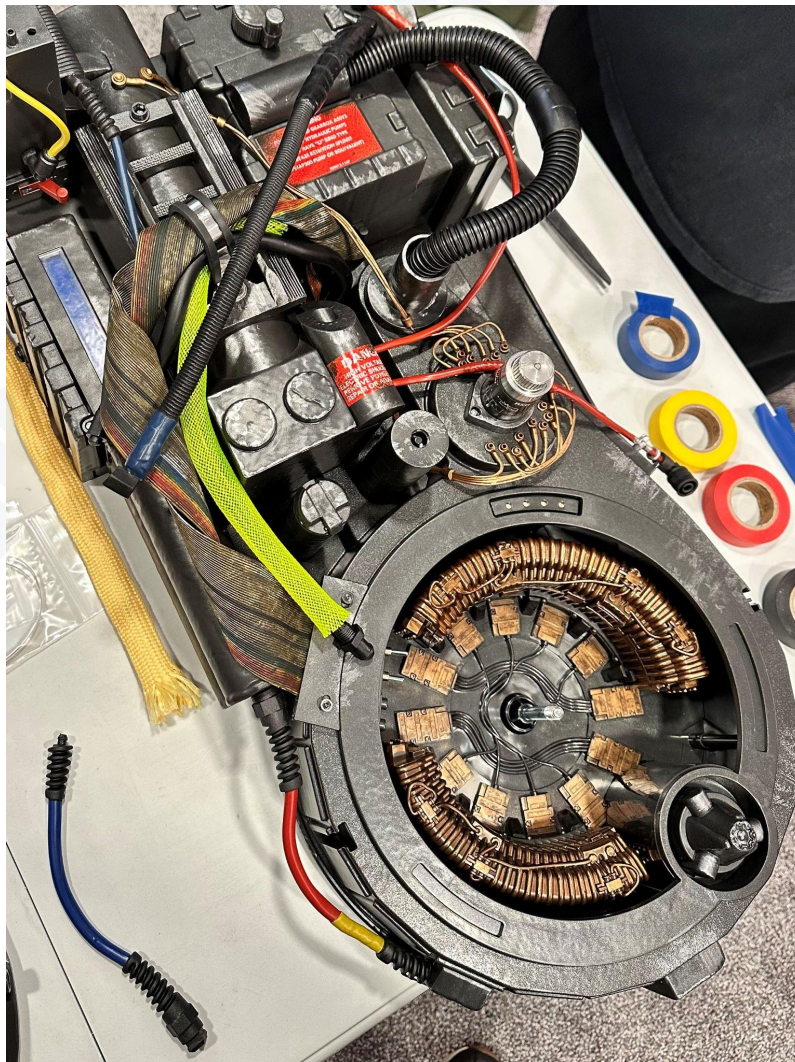
created by www.rightcoastcreative.com/ghostbusters

Some skill and mechanical knowledge of the pack is required to perform this upgrade. All parts of this kit have been tested and illustrated to help provide the best possible guide in assisting you to complete the upgrade. I assume no responsibility for any damage during disassembly, installation, modifications and reassembly, or if parts are installed incorrectly.

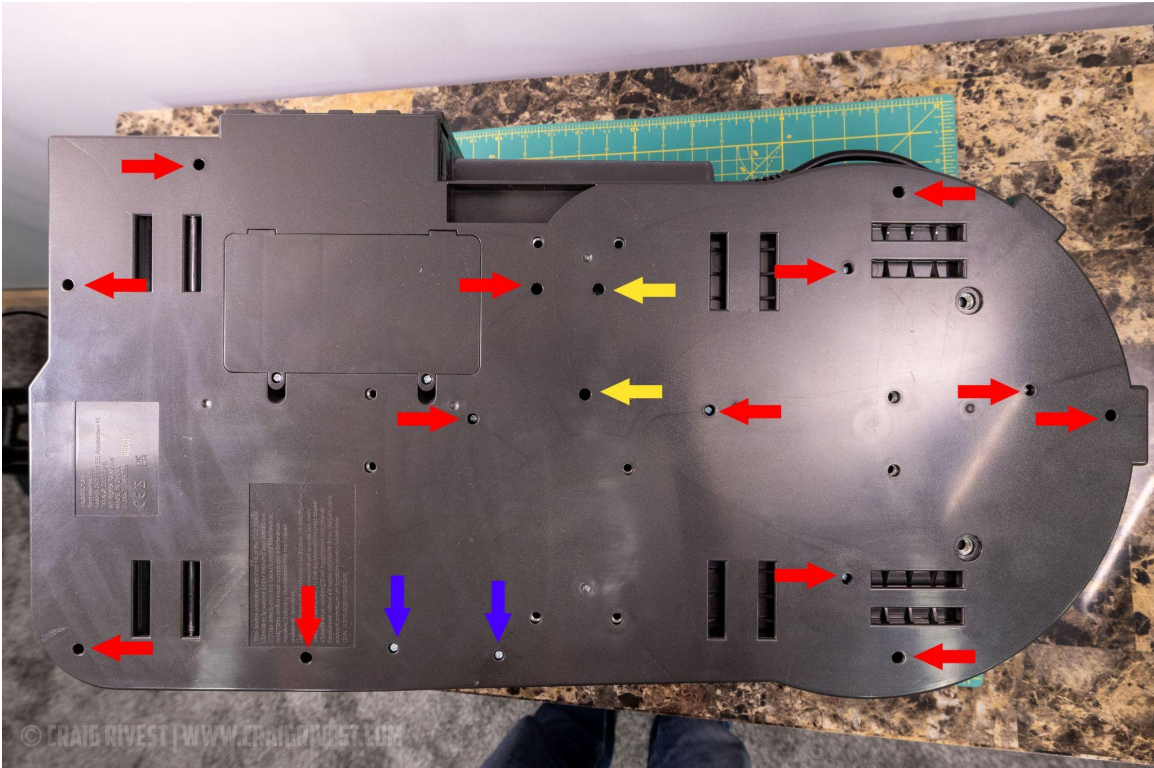
I recommend using the 3000mAh Talentcell battery typically found on Amazon. The reason for this battery is that it fits perfectly inside the Hasbro proton pack side storage compartment without much effort as you'll see below.

1. Remove the Cyclotron

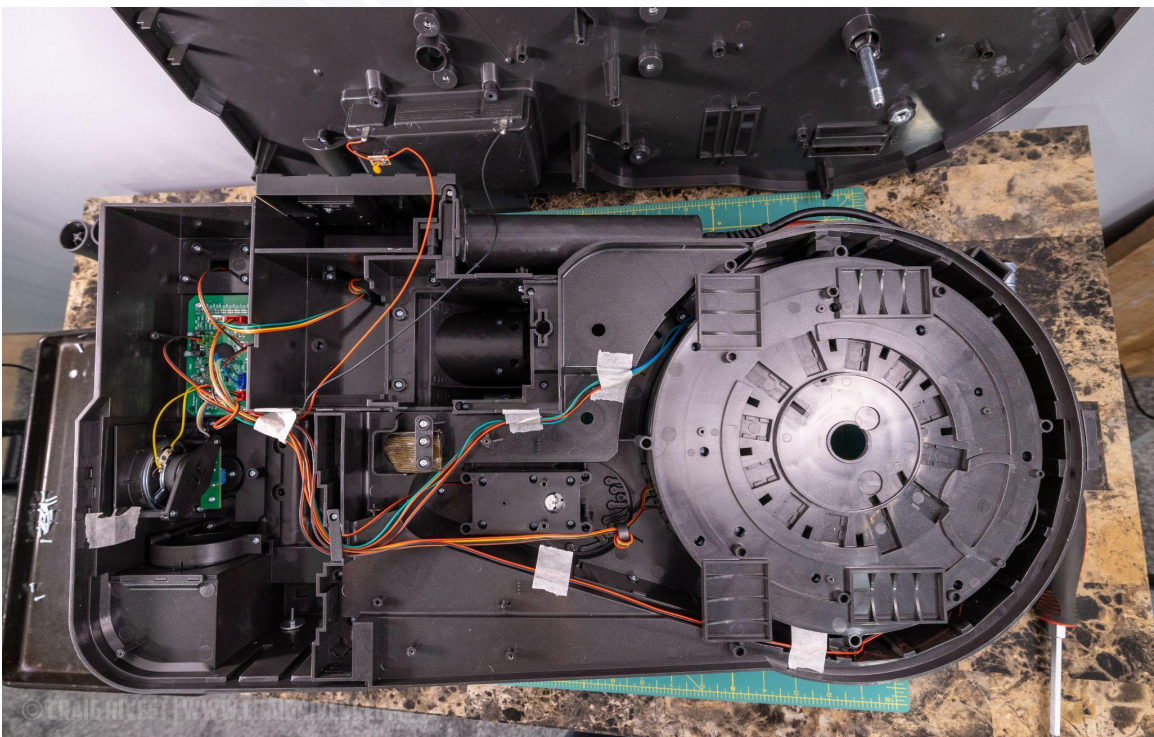
This step is easy to overlook, but if you forget to do it, you could risk breaking the back cover which contains a through bolt. So before you remove the back panel, you will need to remove the bellows, bumper and all cyclotron parts. Then flip the pack over.



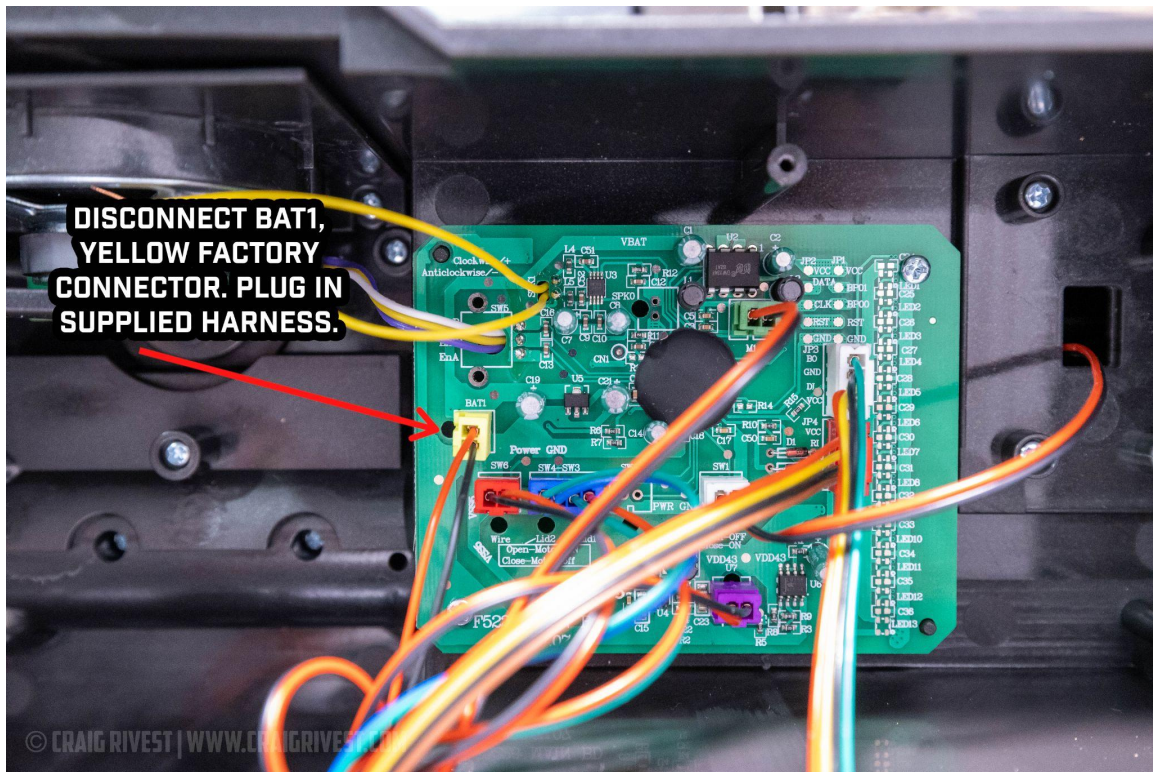
2. Remove the battery door and then the 17 back cover screws. The screws marked with blue are shorter, so keep track of those. The screws marked yellow hold the Filler and Beam line on (the two cylindrical tubes) in place on the front, so they may drop out or twist when unscrewing, just be mindful of that.



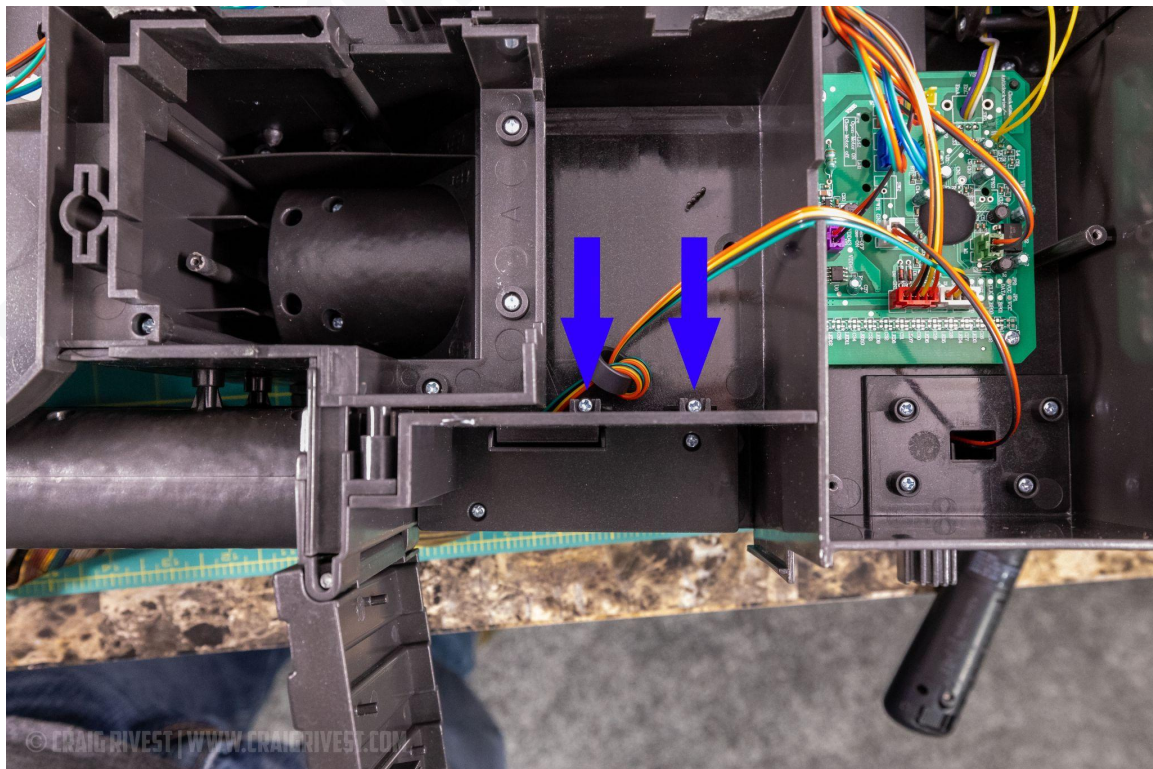
The back cover should now snap off, work slowly around the edges and lift straight up. Once the cover is off, be careful not to over extend the connected factory power wires. They go from the back cover to the BAT1 location on the main board.



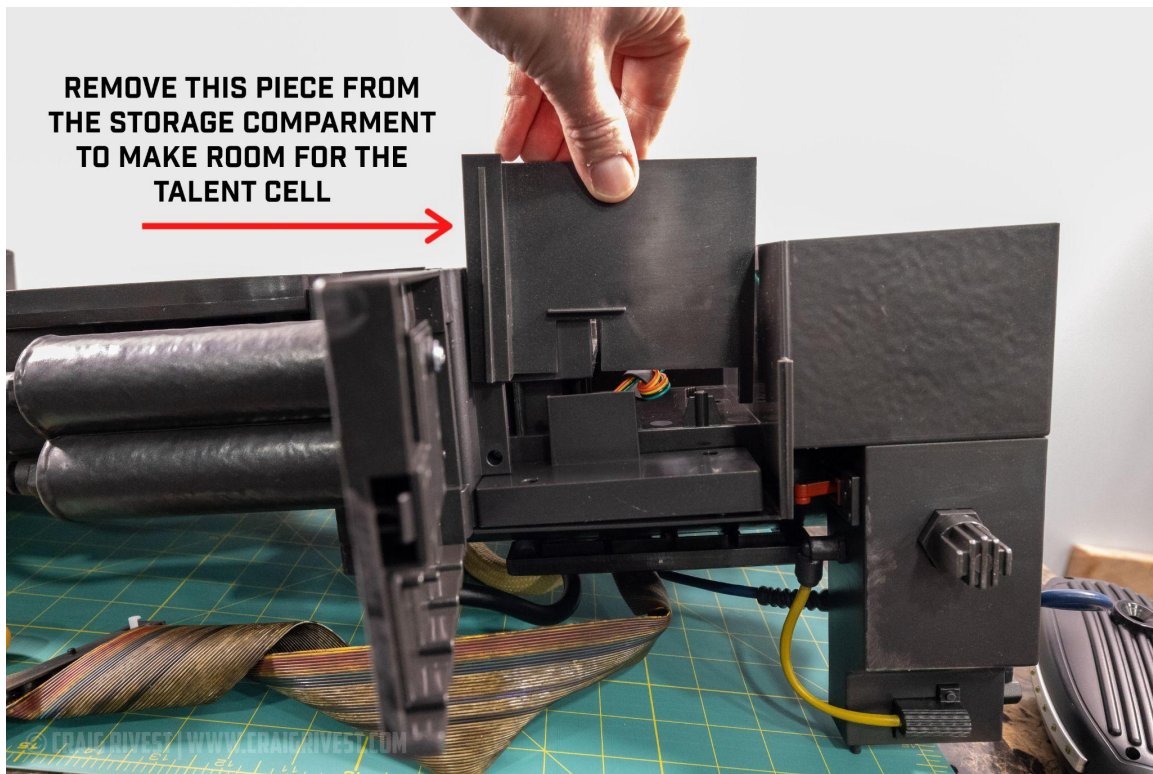
3. Disconnect the yellow BAT1 connector from the main board and set aside the back cover. You can coil this wire up and tape it to the back cover's inside if you wish. You won't be needing it anymore.



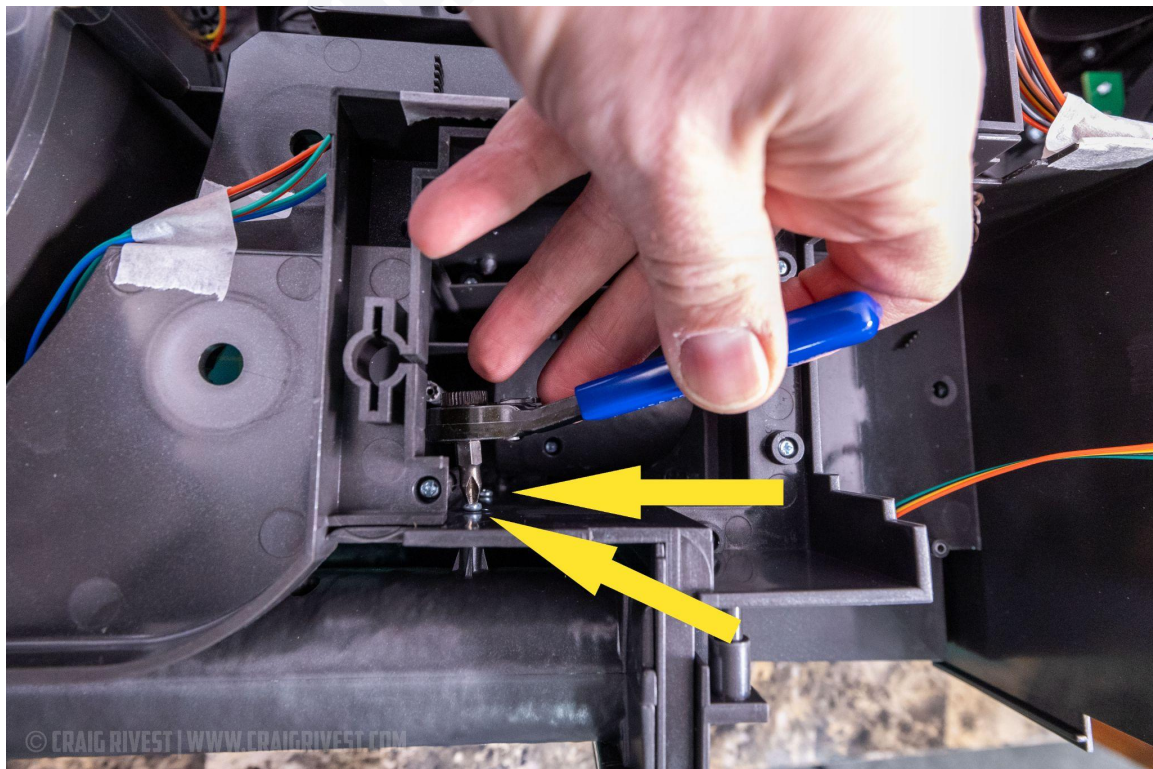
4. Remove the two screws for the storage compartment inner wall panel.



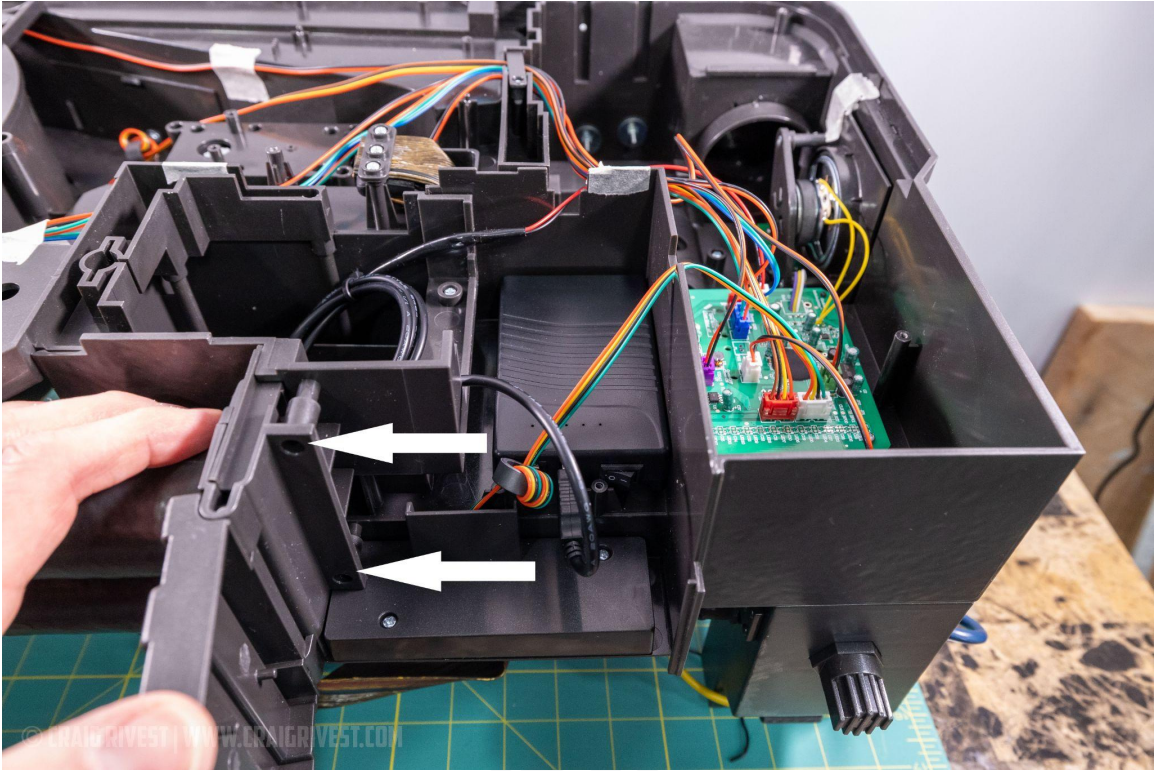
5. Remove the storage compartment inner wall panel, it pulls straight up. You wont need this anymore so set it aside.



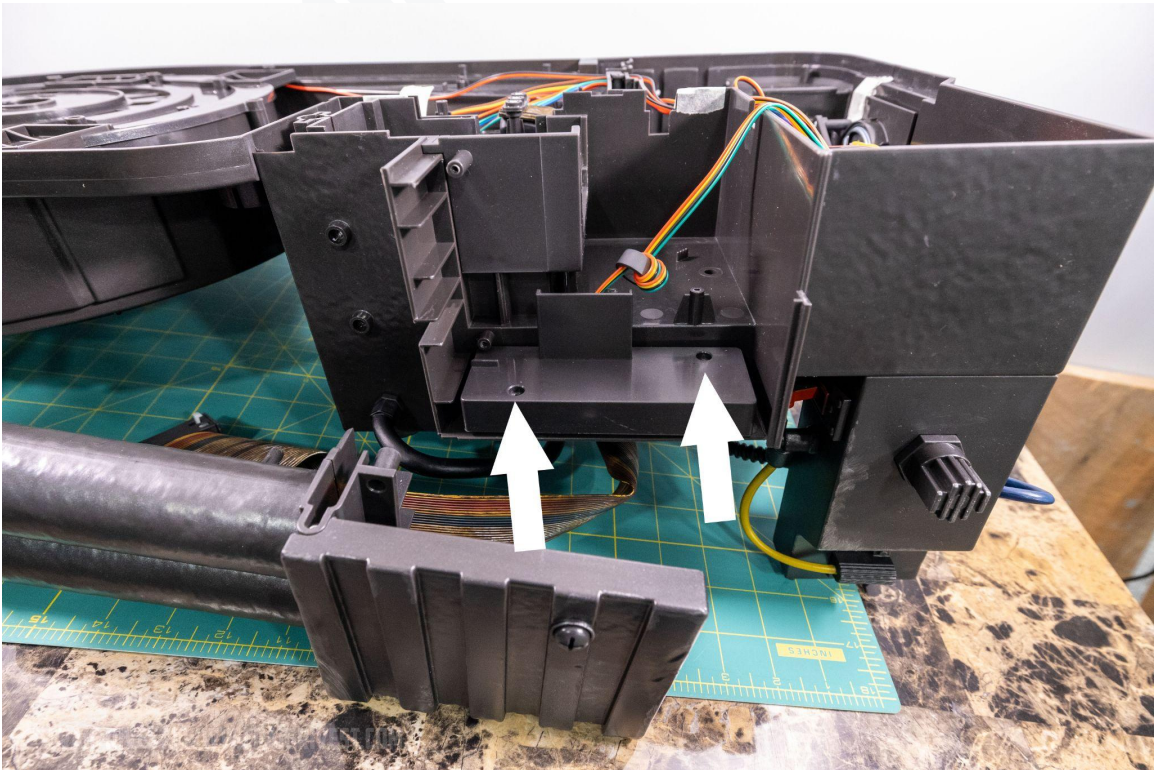
6. Remove two screws that secure the Injector tubes from the inside. Using a right angle ratcheting screwdriver will make this A LOT easier.



7. Remove two screws that hold the storage compartment door and pull the door out towards you. (Ignore the Talentcell in this photo, we'll install it later on).



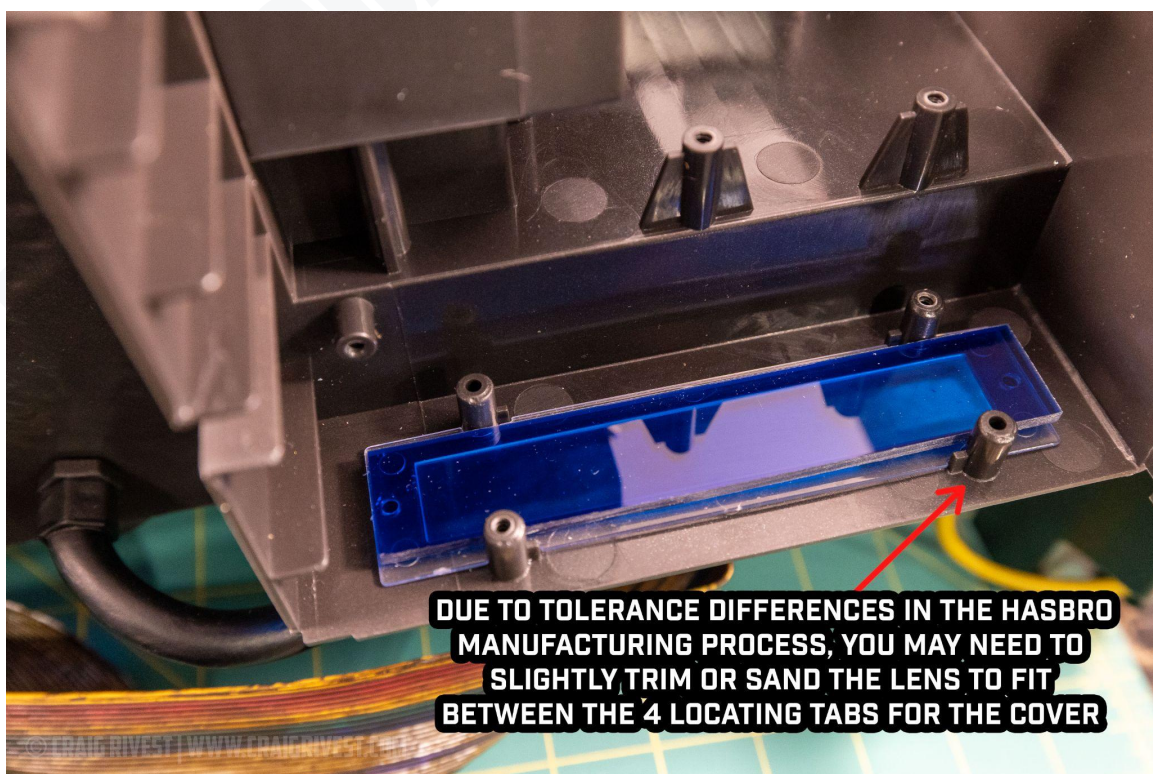
8. Remove two screws that hold the power cell lens cover on and remove the cover.



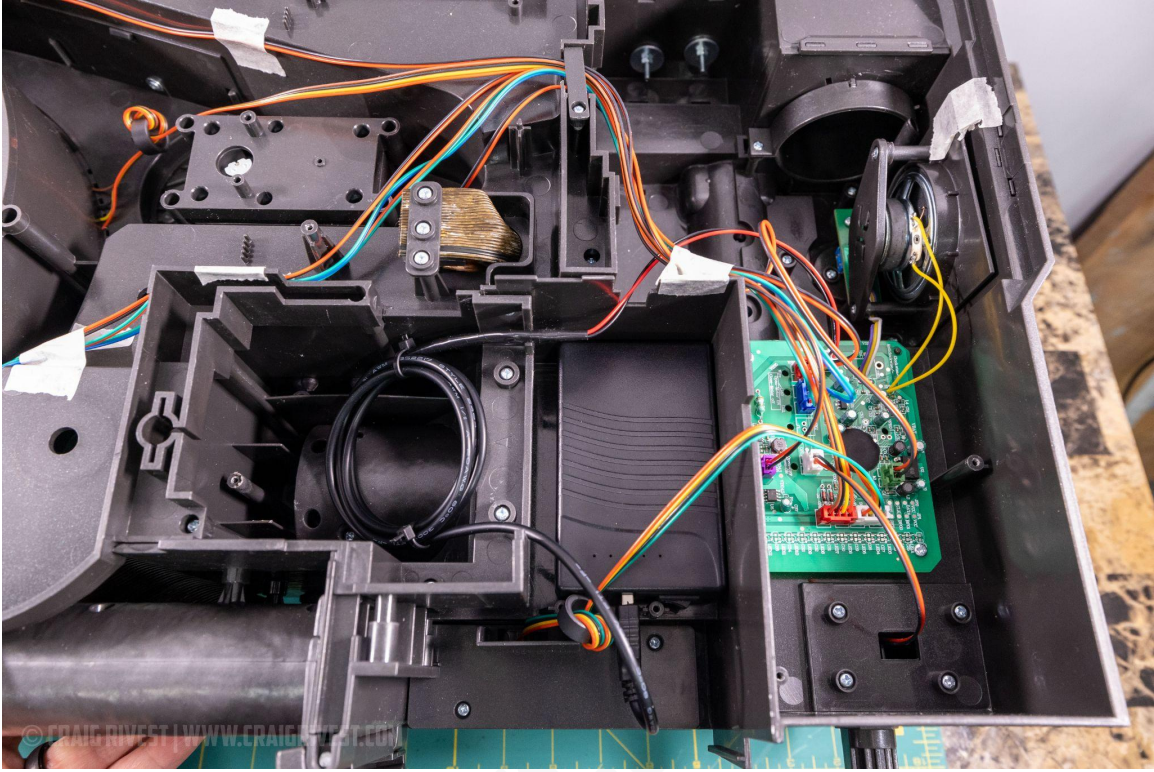
9. Use a small screwdriver and pop up the factory frosted white lens cover. You will also need to break off these 4 small nubs with pliers. This is where the Talentcell will be placed later.



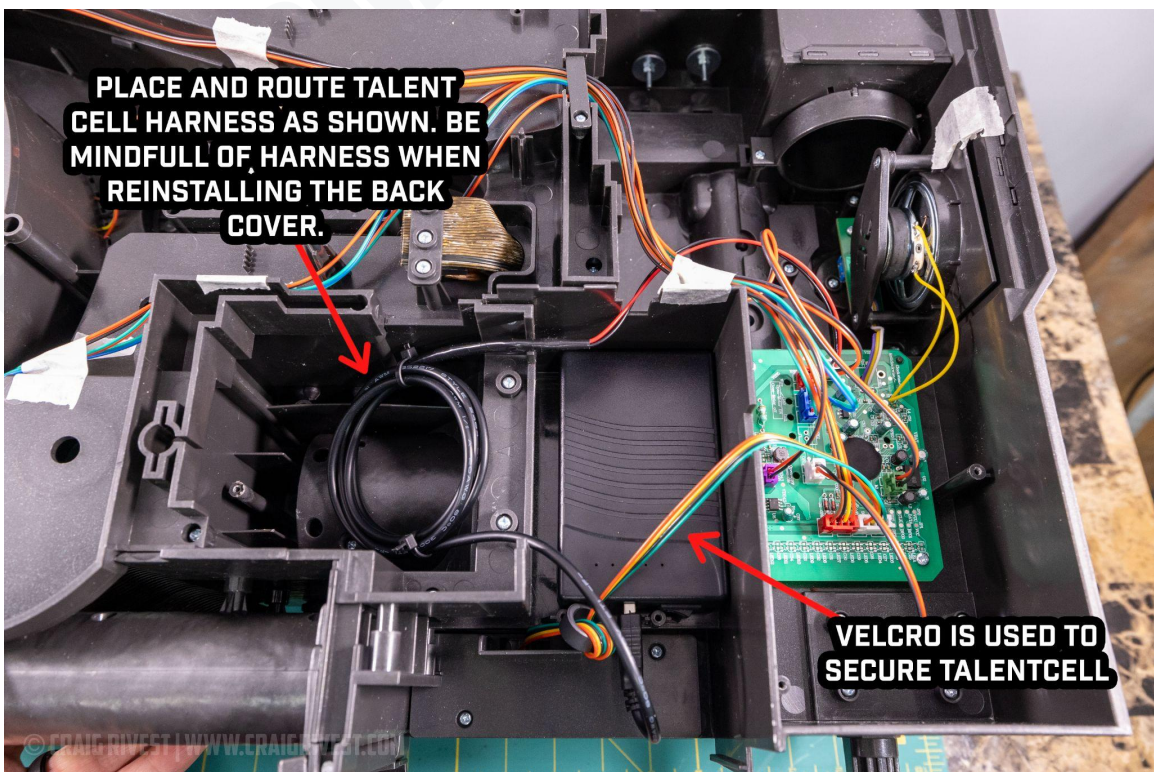
10. Install the new acrylic blue power cell lens. The lens is designed to be a direct fit without cutting the proton pack. Then reinstall the power cell cover.



11. Reinstall the injector tubes and screws and the storage compartment door and screws. Install a 3000mAh Talentcell with velcro on the bottom and place it as shown.



Install the JST to USB power cable as shown. You may be tempted to power everything on now to test. However, the pack will not power on until the cyclotron is properly installed. You can now reassemble the pack, watch for wires when reassembling.

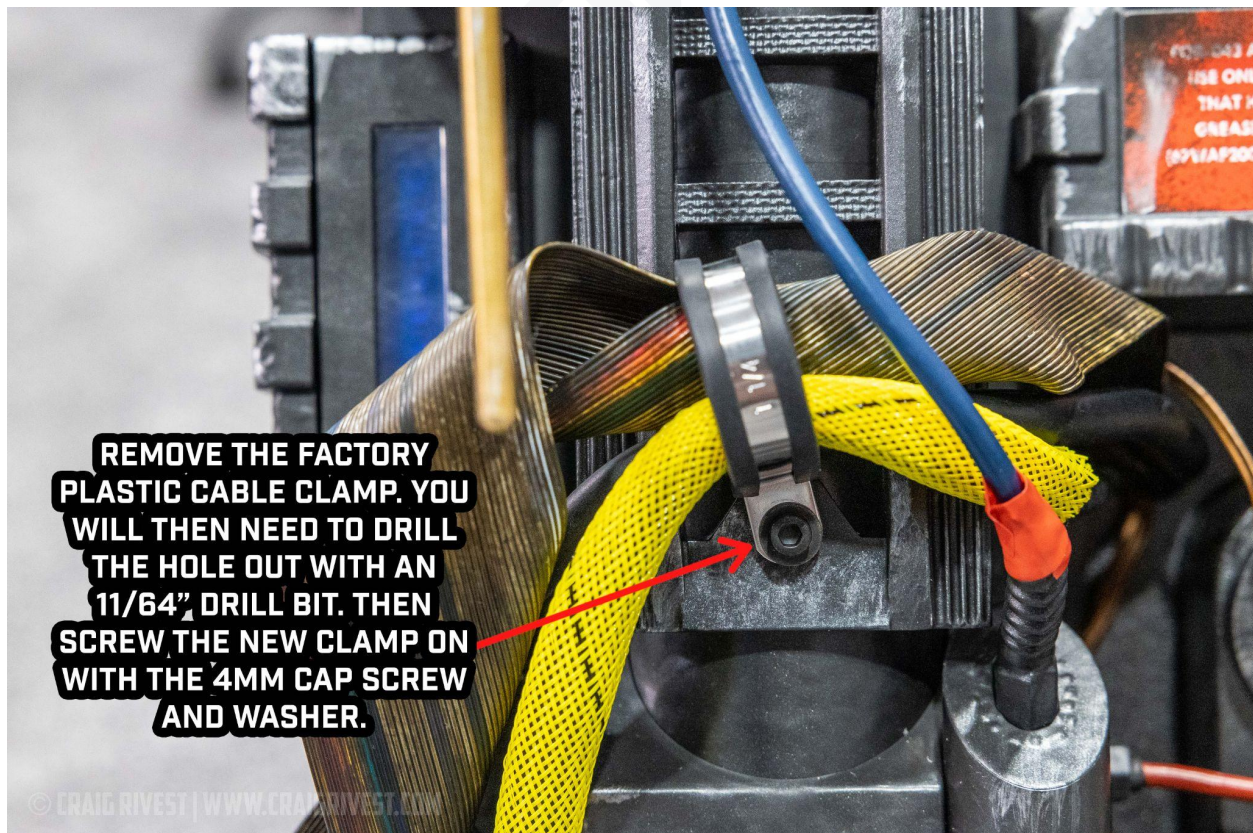


12. You can now move onto the cosmetic part of the upgrade. This may be minor, but it adds a sense of fun to the customization of your proton pack.

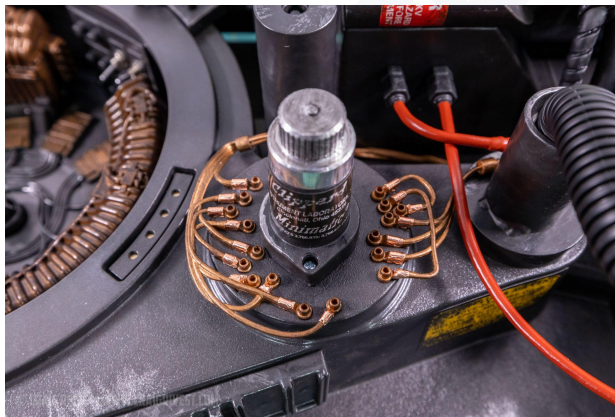
Remove the phillips screw and the factory plastic cable clamp.

With the factory clamp removed, now would be a good time to also swap the hideous factory yellow fabric wire covering and install the Afterlife accurate, yellow and black tracer wire cover. The FLEXO-PET in this kit was cut with a hot knife, but you may still need to burn the ends with a lighter so it does not fray during installation.

Next you will need to drill the hole out in which you removed the phillips screw with an 11/64" drill bit. You can then add the new metal 1-1/4" cable clamp and secure it with the supplied 4mm cap screw and washer. Remember to be careful during drilling, I assume no responsibility for damage from improper drilling methods. 😊



13. Finally, cut the copper foil tape into pieces, between $\frac{1}{4}$ " and $\frac{1}{2}$ ", peel the backing, then wrap the foil around each wire terminal. I found using a small pocket screwdriver helped tuck the foil easier. There is plenty of copper foil, so have fun.



If you purchased a kit from me, then thank you for your support, I appreciate it!. If you found these instructions and they helped you mod your pack, then enjoy and happy BUSTING!

~Craig Rivest (Right Coast Creative LLC)
www.rightcoastcreative.com/ghostbusters

